



Fiberglass Reinforced uPVC windows

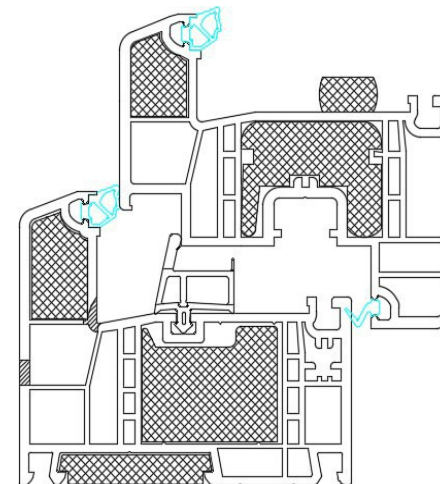
Tyrol Series PH+ – PHPP & WUFI Frame Inputs

| Tyrol PH+ Tilt-Turn/Hopper | | Uf Value (BTU/hr-ft ² -°F) | Dimension (in.) | Ψglazing edge (BTU/hr-ft-°F) |
|----------------------------|--------|---------------------------------------|-----------------|------------------------------|
| True Triple | left | 0.13 | 4.53 | 0.01 |
| | right | 0.13 | 4.53 | 0.01 |
| | bottom | 0.13 | 4.53 | 0.01 |
| | above | 0.13 | 4.53 | 0.01 |
| Heat Mirror | left | 0.14 | 4.53 | 0.03 |
| | right | 0.14 | 4.53 | 0.03 |
| | bottom | 0.14 | 4.53 | 0.03 |
| | above | 0.14 | 4.53 | 0.03 |

Calculated according to passive house ISO 10077-2 methodology



Fiberglass Reinforced uPVC windows



**Tyrol Series PH+
Tilt-Turn & Hopper**

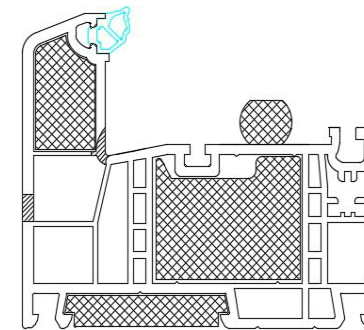
Tyrol Series PH+ – PHPP & WUFI Frame Inputs

| Tyrol PH+ Fixed/Picture | | Uf Value (BTU/hr-ft ² ·°F) | Dimension (in.) | Ψglazing edge (BTU/hr-ft·°F) |
|-------------------------|--------|---------------------------------------|-----------------|------------------------------|
| True Triple | left | 0.12 | 2.83 | 0.01 |
| | right | 0.12 | 2.83 | 0.01 |
| | bottom | 0.12 | 2.83 | 0.01 |
| | above | 0.12 | 2.83 | 0.01 |
| Heat Mirror | left | 0.12 | 2.83 | 0.03 |
| | right | 0.12 | 2.83 | 0.03 |
| | bottom | 0.12 | 2.83 | 0.03 |
| | above | 0.12 | 2.83 | 0.03 |

Calculated according to passive house ISO 10077-2 methodology



Fiberglass Reinforced uPVC windows



**Tyrol Series PH+
Fixed / Picture Windows**

Tyrol Series PH+ — PHPP & WUFI Glazing Input

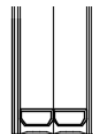
| Glazing Type | Overall Thickness (in) | Ug [BTU/hr·ft ² ·°F] | SHGC | VT | Uw (Tilt-Turn) [BTU/hr·ft ² ·°F] |
|---|------------------------|---------------------------------|------|------|---|
| HighGain-6 PH+ True Triple (47.2mm) | 1-7/8" | 0.107 | 0.57 | 0.70 | 0.125 |
| Balanced-6 PH+ True Triple (47.2mm) | 1-7/8" | 0.096 | 0.38 | 0.57 | 0.117 |
| SolarControl-6 PH+ True Triple (47.2mm) | 1-7/8" | 0.098 | 0.28 | 0.57 | 0.119 |
| Balanced-6 PH+ | 1-5/8" | 0.095 | 0.37 | 0.56 | 0.130 |
| SolarControl-6 PH+ | 1-5/8" | 0.106 | 0.34 | 0.57 | 0.137 |
| HighGain-6 PH + | 1-5/8" | 0.113 | 0.54 | 0.70 | 0.142 |
| HighGain-6 Pro PH + | 1-5/8" | 0.102 | 0.51 | 0.67 | 0.134 |
| Balanced-9 PH+ | 1-5/8" | 0.066 | 0.33 | 0.49 | 0.110 |
| Solarcontrol-9 PH+ | 1-5/8" | 0.071 | 0.25 | 0.51 | 0.113 |
| HighGain-9 PH+ | 1-5/8" | 0.077 | 0.47 | 0.62 | 0.117 |
| HighGain-9 Pro PH+ | 1-5/8" | 0.070 | 0.44 | 0.60 | 0.113 |
| TR-11 PH+ | 1-5/8" | 0.060 | 0.21 | 0.38 | 0.106 |

Calculated according to EN673

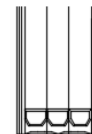
6 SERIES TRUE TRIPLE PH+
47.2mm OA



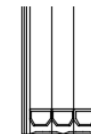
6 SERIES PH+
1 5/8" OA



9 SERIES PH+
1 5/8" OA



11 SERIES PH+
1 5/8" OA



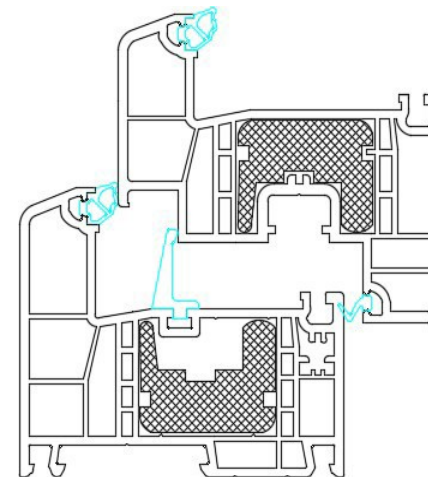
Glazing Options

Tyrol Series – PHPP & WUFI Frame Inputs

| Tyrol Tilt Turn/Hopper | | Uf Value (BTU/hr-ft ² ·°F) | Dimension (in.) | Ψglazing edge (BTU/hr-ft·°F) |
|------------------------|--------|---------------------------------------|-----------------|------------------------------|
| True Triple | left | 0.15 | 4.53 | 0.01 |
| | right | 0.15 | 4.53 | 0.01 |
| | bottom | 0.15 | 4.53 | 0.01 |
| | above | 0.15 | 4.53 | 0.01 |
| Heat Mirror | left | 0.15 | 4.53 | 0.03 |
| | right | 0.15 | 4.53 | 0.03 |
| | bottom | 0.15 | 4.53 | 0.03 |
| | above | 0.15 | 4.53 | 0.03 |

Based on DIN EN 12412-2 testresults

Fiberglass Reinforced uPVC windows



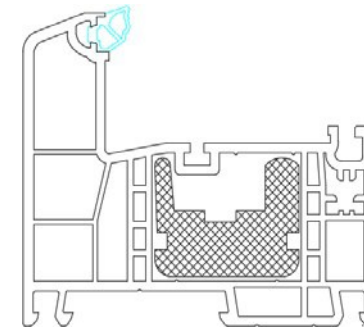
**Tyrol Series
Tilt-Turn & Hopper**

Tyrol Series – PHPP & WUFI Frame Inputs

| Tyrol Fixed / Picture | | Uf Value (BTU/hr·ft ² ·°F) (estimated) | Dimension (in.) | ψglazing edge(BTU/hr·ft·°F) |
|-----------------------|--------|--|-----------------|-----------------------------|
| True Triple | left | 0.14 | 2.83 | 0.01 |
| | right | 0.14 | 2.83 | 0.01 |
| | bottom | 0.14 | 2.83 | 0.01 |
| | above | 0.14 | 2.83 | 0.01 |
| Heat Mirror | left | 0.14 | 2.83 | 0.03 |
| | right | 0.14 | 2.83 | 0.03 |
| | bottom | 0.14 | 2.83 | 0.03 |
| | above | 0.14 | 2.83 | 0.03 |

Estimated from DIN EN 12412-2 results

Fiberglass Reinforced uPVC windows



Tyrol Series
Fixed / Picture Window

Tyrol Series – PHPP & WUFI Glazing Inputs

| Glazing Type | Overall Thickness (in) | Ug [BTU/hr·ft ² ·°F] | SHGC | VT | Uw [BTU/hr·ft ² ·°F] (Tilt-Turn) |
|-----------------------------------|------------------------|---------------------------------|------|------|---|
| Balance-6 True Triple | 1-3/8" | 0.121 | 0.38 | 0.57 | 0.141 |
| SolarControl-6 True Triple | 1-3/8" | 0.122 | 0.28 | 0.57 | 0.142 |
| HighGain-6 True Triple | 1-3/8" | 0.130 | 0.56 | 0.69 | 0.147 |
| Balanced-6 | 1-3/8" | 0.109 | 0.37 | 0.56 | 0.142 |
| SolarControl-6 | 1-3/8" | 0.118 | 0.28 | 0.57 | 0.148 |
| HighGain-6 | 1-3/8" | 0.128 | 0.52 | 0.70 | 0.155 |
| Balanced-7 | 1" | 0.102 | 0.37 | 0.56 | 0.138 |
| SolarControl-7 | 1" | 0.112 | 0.28 | 0.57 | 0.144 |
| HighGain-7 | 1" | 0.122 | 0.52 | 0.70 | 0.151 |
| Balanced-9 | 1-3/8" | 0.076 | 0.33 | 0.49 | 0.120 |
| SolarControl-9 | 1-3/8" | 0.081 | 0.25 | 0.50 | 0.123 |
| HighGain-9 | 1-3/8" | 0.087 | 0.45 | 0.62 | 0.127 |
| TR-11 | 1-3/8" | 0.070 | 0.21 | 0.38 | 0.116 |

Calculated according to EN673

6 SERIES TRUE TRIPLE
1 3/8" OA



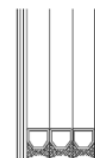
6 SERIES
1 3/8" OA



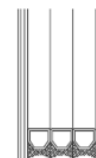
7 SERIES
1" OA



9 SERIES
1 3/8" OA



11 SERIES
1 3/8" OA



Glazing Options