



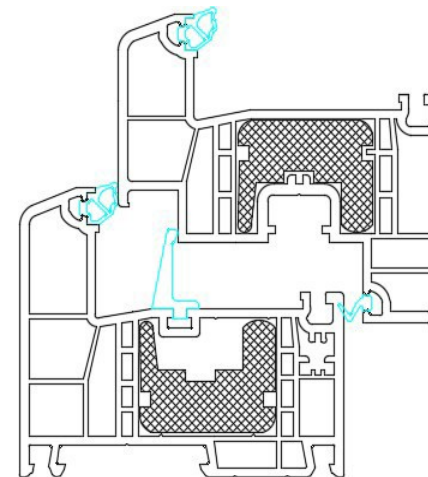
**Fiberglass Reinforced uPVC windows**

# Tyrol Series – PHPP & WUFI Frame Inputs

Tyrol Tilt Turn/Hopper		Uf Value (BTU/hr-ft <sup>2</sup> ·°F)	Dimension (in.)	Ψglazing edge (BTU/hr-ft·°F)
<b>True Triple</b>	left	0.15	4.53	0.01
	right	0.15	4.53	0.01
	bottom	0.15	4.53	0.01
	above	0.15	4.53	0.01
<b>Heat Mirror</b>	left	0.15	4.53	0.03
	right	0.15	4.53	0.03
	bottom	0.15	4.53	0.03
	above	0.15	4.53	0.03

Based on DIN EN 12412-2 testresults

**Fiberglass Reinforced uPVC windows**



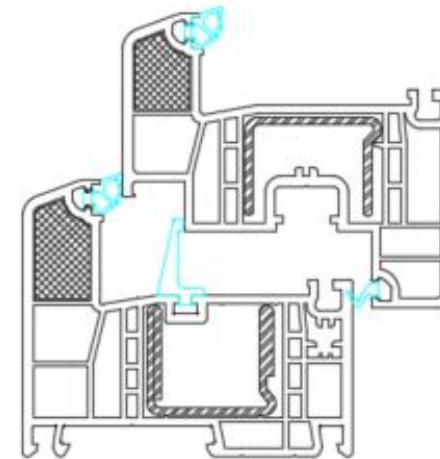
**Tyrol Series  
Tilt-Turn & Hopper**

# Tyrol Reinforced – PHPP & WUFI Frame Inputs

Tyrol Tilt Turn/Hopper		Uf Value (BTU/hr-ft <sup>2</sup> ·°F)	Dimension (in.)	Ψglazing edge (BTU/hr-ft·°F)
<b>True Triple</b>	left	0.19	4.53	0.01
	right	0.19	4.53	0.01
	bottom	0.19	4.53	0.01
	above	0.19	4.53	0.01
<b>Heat Mirror</b>	left	0.19	4.53	0.03
	right	0.19	4.53	0.03
	bottom	0.19	4.53	0.03
	above	0.19	4.53	0.03

Based on DIN EN 12412-2 testresults

**Fiberglass Reinforced uPVC windows**



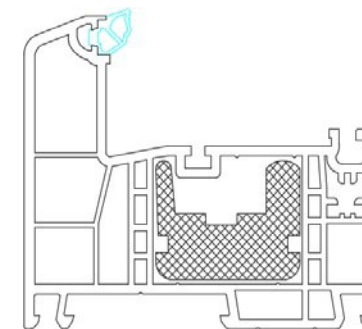
**Tyrol Series  
Tilt-Turn & Hopper**

## Tyrol Series – PHPP & WUFI Frame Inputs

Tyrol Fixed / Picture		Uf Value (BTU/hr·ft <sup>2</sup> ·°F) (estimated)	Dimension (in.)	Ψglazing edge(BTU/hr·ft·°F)
<b>True Triple</b>	left	0.17	2.83	0.01
	right	0.17	2.83	0.01
	bottom	0.17	2.83	0.01
	above	0.17	2.83	0.01
<b>Heat Mirror</b>	left	0.17	2.83	0.03
	right	0.17	2.83	0.03
	bottom	0.17	2.83	0.03
	above	0.17	2.83	0.03

Based on DIN EN 12412-2 testresults

**Fiberglass Reinforced uPVC windows**



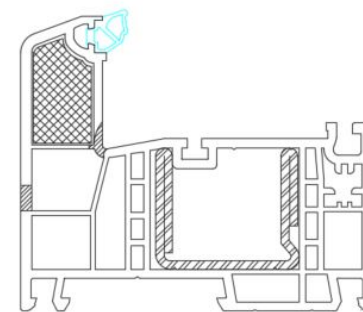
**Tyrol Series  
Fixed / Picture Window**

# Tyrol Reinforced – PHPP & WUFI Frame Inputs

Tyrol Fixed / Picture		Uf Value (BTU/hr·ft <sup>2</sup> ·°F) (estimated)	Dimension (in.)	Ψglazing edge(BTU/hr·ft·°F)
<b>True Triple</b>	left	0.21	2.83	0.01
	right	0.21	2.83	0.01
	bottom	0.21	2.83	0.01
	above	0.21	2.83	0.01
<b>Heat Mirror</b>	left	0.21	2.83	0.03
	right	0.21	2.83	0.03
	bottom	0.21	2.83	0.03
	above	0.21	2.83	0.03

Estimated from DIN EN 12412-2 results

**Fiberglass Reinforced uPVC windows**



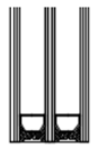
**Tyrol Series**  
**Fixed / Picture Window**

## Glazing Inputs – Tyrol Series

Glazing Type	Overall Thickness (in)	Ug [BTU/hr·ft <sup>2</sup> ·°F]	SHGC	VT	Uw (Tilt-Turn) [BTU/hr·ft <sup>2</sup> ·°F]
<b>Balance-6 True Triple</b>	1-3/8"	0.121	0.38	0.57	0.14
<b>SolarControl-6 True Triple</b>	1-3/8"	0.122	0.28	0.57	0.14
<b>HighGain-6 True Triple</b>	1-3/8"	0.130	0.56	0.69	0.15
<b>Balanced-6</b>	1-3/8"	0.109	0.37	0.56	0.14
<b>SolarControl-6</b>	1-3/8"	0.118	0.28	0.57	0.15
<b>HighGain-6</b>	1-3/8"	0.128	0.52	0.70	0.15
<b>Balanced-6 Pro + Krypton (3mm)</b>	1-3/8"	0.087	0.37	0.56	0.13
<b>HighGain-6 Pro + Krypton (3mm)</b>	1-3/8"	0.094	0.51	0.67	0.13
<b>Balanced-7</b>	1"	0.102	0.37	0.56	0.14
<b>SolarControl-7</b>	1"	0.112	0.28	0.57	0.14
<b>HighGain-7</b>	1"	0.122	0.52	0.70	0.15
<b>Balanced-9</b>	1-3/8"	0.076	0.33	0.49	0.12
<b>SolarControl-9</b>	1-3/8"	0.081	0.25	0.50	0.12
<b>HighGain-9</b>	1-3/8"	0.087	0.45	0.62	0.13
<b>TR-11</b>	1-3/8"	0.070	0.21	0.38	0.116

Calculated according to EN673/EN410

6 SERIES TRUE TRIPLE  
1 3/8" OA



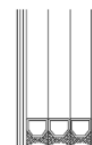
6 SERIES  
1 3/8" OA



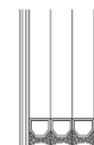
7 SERIES  
1" OA



9 SERIES  
1 3/8" OA



11 SERIES  
1 3/8" OA



### Tyrol Series Glazing Options