

## *Tyrol Series PH+ –PHPP & WUFI Inputs*



**Fiberglass Reinforced uPVC windows**

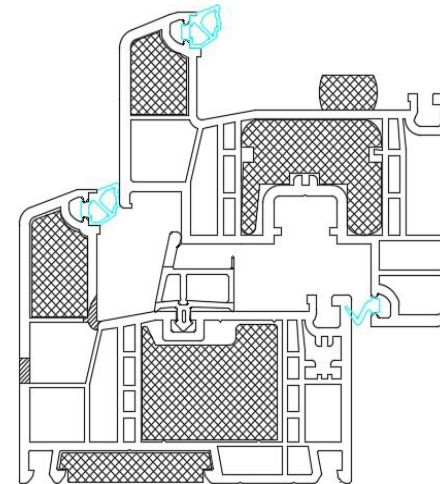
## Tyrol Series PH+ – PHPP & WUFI Frame Inputs

Tyrol PH+ Tilt-Turn/Hopper		Uf Value (BTU/hr-ft <sup>2</sup> -°F)	Dimension (in.)	Ψglazing edge (BTU/hr-ft-°F)
True Triple	left	0.13	4.53	0.01
	right	0.13	4.53	0.01
	bottom	0.13	4.53	0.01
	above	0.13	4.53	0.01
Heat Mirror	left	0.14	4.53	0.03
	right	0.14	4.53	0.03
	bottom	0.14	4.53	0.03
	above	0.14	4.53	0.03

Calculated according to passive house ISO 10077-2 methodology



**Fiberglass Reinforced uPVC windows**



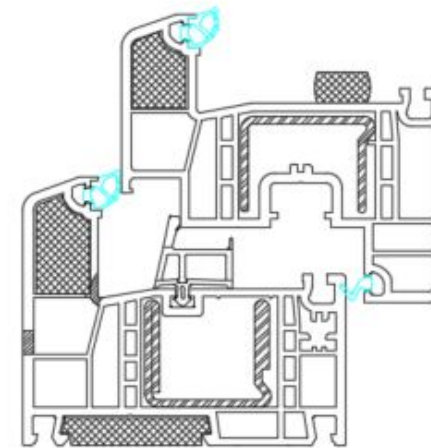
**Tyrol Series PH+  
Tilt-Turn & Hopper**

## Tyrol Reinforced PH+ – PHPP & WUFI Frame Inputs

Tyrol PH+ Tilt-Turn/Hopper		Uf Value (BTU/hr-ft <sup>2</sup> ·°F)	Dimension (in.)	Ψglazing edge (BTU/hr-ft·°F)
<b>True Triple</b>	left	0.19	4.53	0.01
	right	0.19	4.53	0.01
	bottom	0.19	4.53	0.01
	above	0.19	4.53	0.01
<b>Heat Mirror</b>	left	0.19	4.53	0.03
	right	0.19	4.53	0.03
	bottom	0.19	4.53	0.03
	above	0.19	4.53	0.03

Based on DIN EN 12412-2 testresults

**Fiberglass Reinforced uPVC windows**



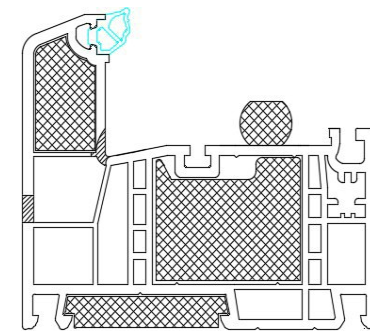
**Tyrol Series PH+  
Tilt-Turn & Hopper**

## Tyrol Series PH+ – PHPP & WUFI Frame Inputs

Tyrol PH+ Fixed/Picture		Uf Value (BTU/hr-ft <sup>2</sup> ·°F)	Dimension (in.)	Ψglazing edge (BTU/hr-ft·°F)
<b>True Triple</b>	left	0.13	2.83	0.01
	right	0.13	2.83	0.01
	bottom	0.13	2.83	0.01
	above	0.13	2.83	0.01
<b>Heat Mirror</b>	left	0.13	2.83	0.03
	right	0.13	2.83	0.03
	bottom	0.13	2.83	0.03
	above	0.13	2.83	0.03

Calculated according to passive house ISO 10077-2 methodology

**Fiberglass Reinforced uPVC windows**



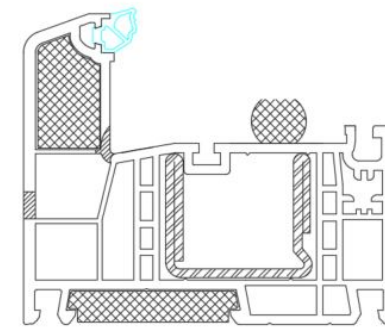
**Tyrol Series PH+  
Fixed / Picture Windows**

## Tyrol Reinforced PH+ – PHPP & WUFI Frame Inputs

Tyrol PH+ Fixed/Picture		Uf Value (BTU/hr-ft <sup>2</sup> ·°F)	Dimension (in.)	Ψglazing edge (BTU/hr-ft·°F)
<b>True Triple</b>	left	0.18	2.83	0.01
	right	0.18	2.83	0.01
	bottom	0.18	2.83	0.01
	above	0.18	2.83	0.01
<b>Heat Mirror</b>	left	0.18	2.83	0.03
	right	0.18	2.83	0.03
	bottom	0.18	2.83	0.03
	above	0.18	2.83	0.03

Based on DIN EN 12412-2 testresults

**Fiberglass Reinforced uPVC windows**



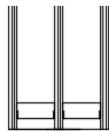
**Tyrol Series PH+  
Fixed / Picture Windows**

## Glazing Inputs – Tyrol Series PH+

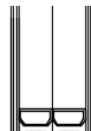
Glazing Type	Overall Thickness (in)	Ug [BTU/hr·ft <sup>2</sup> ·°F]	SHGC	VT	Uw (Tilt-Turn) [BTU/hr·ft <sup>2</sup> ·°F]
<b>HighGain-6 PH+ True Triple (47.2mm)</b>	1-7/8"	0.107	0.57	0.70	0.13
<b>Balanced-6 PH+ True Triple (47.2mm)</b>	1-7/8"	0.096	0.38	0.57	0.12
<b>SolarControl-6 PH+ True Triple (47.2mm)</b>	1-7/8"	0.098	0.28	0.57	0.12
<b>Balanced-6 PH+</b>	1-5/8"	0.095	0.37	0.56	0.13
<b>SolarControl-6 PH+</b>	1-5/8"	0.106	0.28	0.57	0.14
<b>HighGain-6 PH+</b>	1-5/8"	0.113	0.54	0.70	0.14
<b>HighGain-6 Pro PH+</b>	1-5/8"	0.102	0.51	0.67	0.13
<b>Balanced-6 Pro + Krypton PH+ (5mm)</b>	1-5/8"	0.088	0.36	0.54	0.13
<b>HighGain-6 Pro + Krypton PH+ (5mm)</b>	1-5/8"	0.095	0.50	0.66	0.13
<b>Balanced-9 PH+</b>	1-5/8"	0.066	0.33	0.49	0.11
<b>Solarcontrol-9 PH+</b>	1-5/8"	0.071	0.25	0.51	0.11
<b>HighGain-9 PH+</b>	1-5/8"	0.077	0.45	0.62	0.12
<b>HighGain-9 Pro PH+</b>	1-5/8"	0.07	0.44	0.6	0.11
<b>TR-11 PH+</b>	1-5/8"	0.06	0.21	0.38	0.106

Calculated according to EN673/EN410

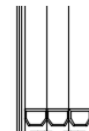
6 SERIES TRUE TRIPLE PH+  
47.2mm OA



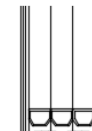
6 SERIES PH+  
1 5/8" OA



9 SERIES PH+  
1 5/8" OA



11 SERIES PH+  
1 5/8" OA



### Tyrol PH+ Series Glazing Options