



### **Tyrol Series TR-6 Windows and Doors**

The European-styled Tyrol Series™ of windows and doors, from Alpen High Performance Products, is a fiberglass reinforced polymer window system that doesn't rely on steel for its strength. Instead, it is composed of a proprietary fiber composite material similar to those employed in aeronautic construction and racing vehicles for outstanding strength and load capacities.

In the hands of our experienced development partner, REHAU®, this unique material was transformed into an extremely strong polymer profile that substantially improves thermal insulation.

With a high performance-to-price ratio, the TR-6 line is perfect for a wide range of residential, commercial and multifamily application.

#### **Benefits:**

- NFRC whole-window ratings up to R-6.7 (U-0.15)
- Center-of-glass performances from R-7.1 (U-0.14) to R-8.3 (U-0.12)
- Based on the award winning Rehau 4700 Geneo profile
- Full range of glazing options for maximum energy savings and comfort
- Fiberglass-reinforced profile allows for larger sizes without steel reinforcement



## TECHNICAL SPECIFICATIONS



### Tyrol Series TR-6 Full Frame NFRC Thermal Performance:

TR-6	Balanced				SolarControl				HighGain			
	U-factor	R-value	SHGC	VT	U-factor	R-value	SHGC	VT	U-factor	R-value	SHGC	VT
<b>Fixed</b>												
<i>Suspended Film</i>	0.15	6.5	0.27	0.44	0.16	6.2	0.19	0.45	0.17	6.0	0.41	0.55
<i>Thin Glass</i>	0.14	7.2	0.28	0.46	0.14	7.2	0.20	0.45	0.14	6.9	0.45	0.56
<b>Tilt Turn/Hopper</b>												
<i>Suspended Film</i>	0.16	6.1	0.23	0.38	0.17	5.9	0.17	0.39	0.18	5.7	0.35	0.48
<i>Thin Glass</i>	0.15	6.8	0.24	0.39	0.15	6.8	0.17	0.39	0.15	6.6	0.39	0.48

#### DESIGNING WITH ALPENGlass AND THINGlass:

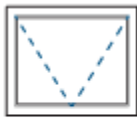
<b>Balanced</b>	Optimal blend of low U-factor and moderate solar control, a well-rounded solution for high performance homes in all climates
<b>SolarControl</b>	Extra protection against unwanted solar gain to keep spaces cool in summer and swing seasons, ideal for West- and South-facing windows in most climates
<b>HighGain</b>	Maximum light and solar heat gain, ideal for passive solar homes and North-facing and well-shaded windows in spaces where more daylight is desired

## WINDOW AND DOOR TYPES



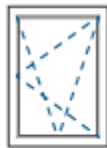
Fixed Window

(up to 119" x 58"  
or 58" x 119")



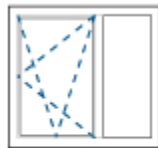
Hopper Window

(up to 59" x 51")



Tilt Turn/  
Hopper Window

(up to 54" x 78")

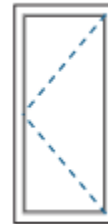


Combination Units

(up to 157" x 78")

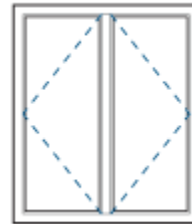
Windows

Doors

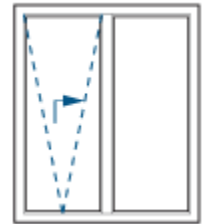


Side-Hinged Doors

(up to 46" x 101"  
or 46" x 100")



French Doors



2-Panel  
Tilt Glide Doors

(up to 119" x 101")

## FINISH OPTIONS

#### Standard Color

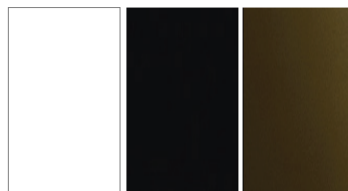
White

#### Upgrade Color Options

Black or Bronze

#### Custom Finishes

Please call to inquire about the availability of custom laminated foil and painted finishes.

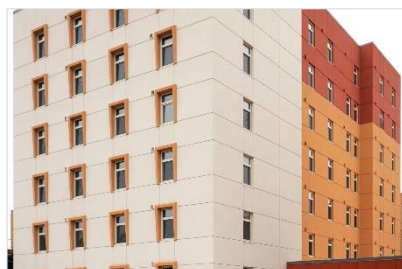


#### Hardware

German-engineered Roto® NT window handles are available in the following standard finishes: White, Black, Dark Bronze and Nickel Silver

Please call to inquire about the availability of custom handle finishes.

## TYROL SERIES IMAGES



#### Acoustic Insulation

ASTM E90 Acoustical  
Up to 45 dB