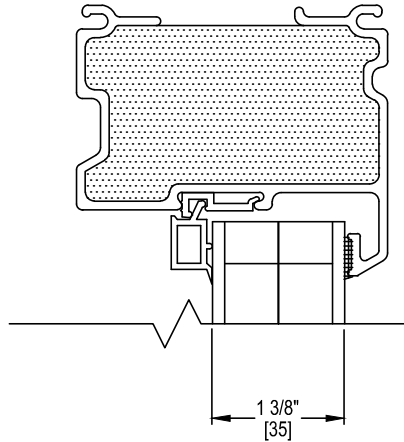
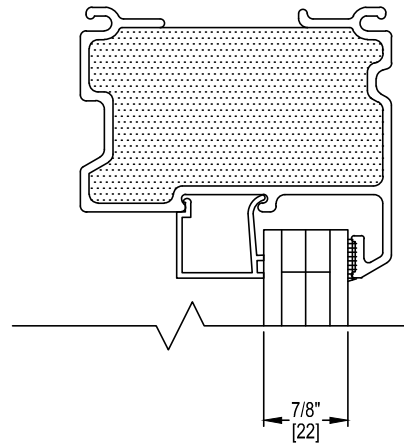


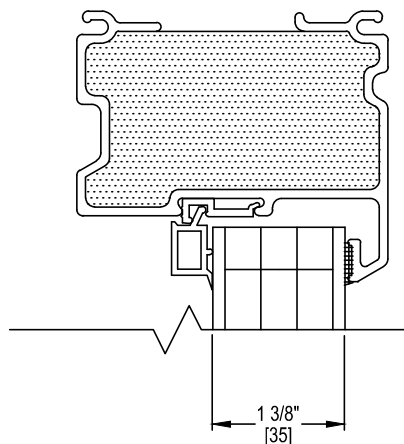
WINDOW DETAILS: GLAZING OPTIONS



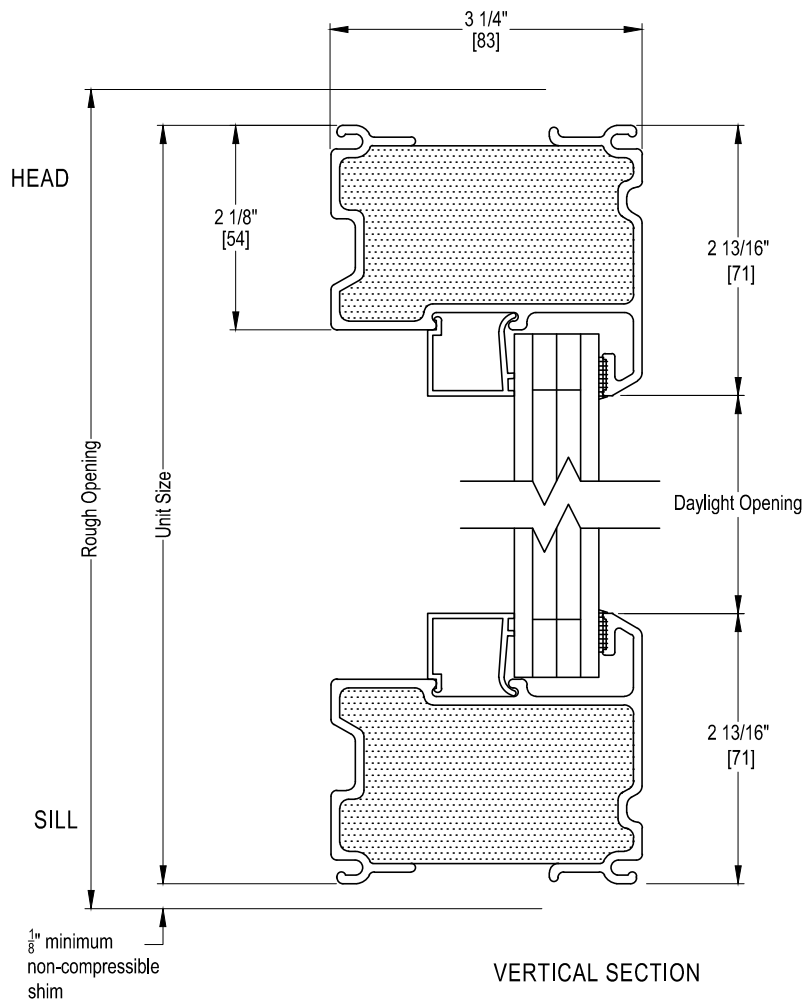
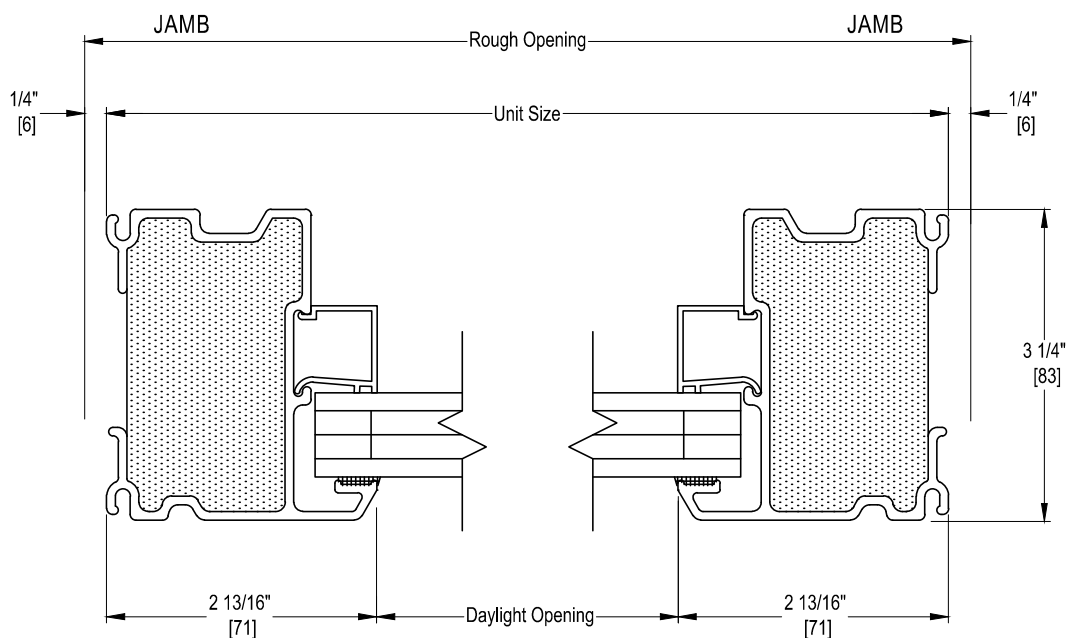
525 SERIES
DUAL PANE WITH 1 SHG FILM
ARGON GAS FILL



725 SERIES
DUAL PANE WITH 1 SHG FILM
KRYPTON GAS FILL

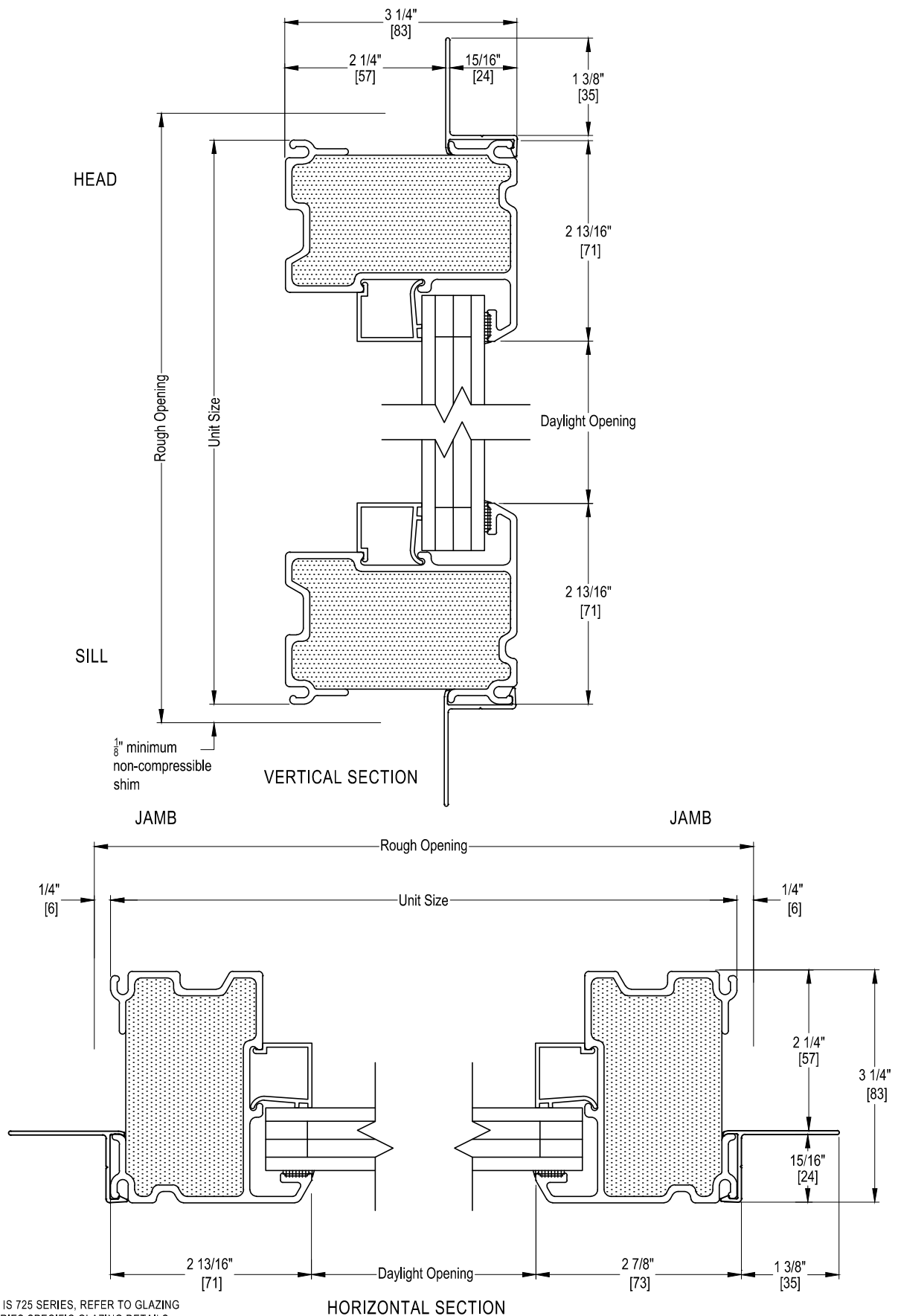


925 SERIES
DUAL PANE WITH 2 SHG FILM
KRYPTON GAS FILL

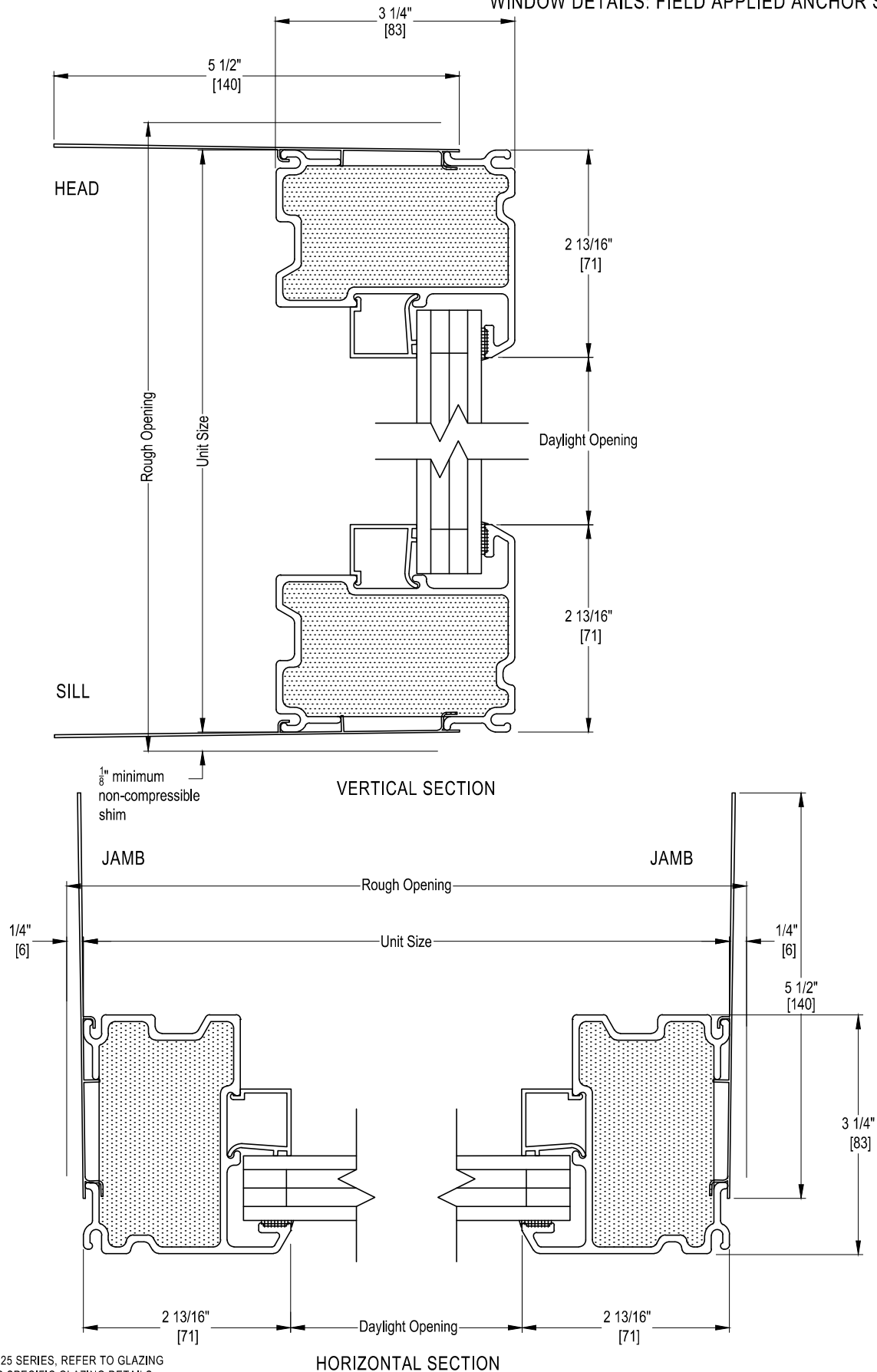
WINDOW DETAILS: SECTIONS AND DIMENSIONS

VERTICAL SECTION

HORIZONTAL SECTION

GLAZING SHOWN IS 725 SERIES, REFER TO GLAZING
 OPTIONS FOR SERIES SPECIFIC GLAZING DETAILS.

WINDOW DETAILS: NON INTEGRAL ALUMINUM NAIL FIN

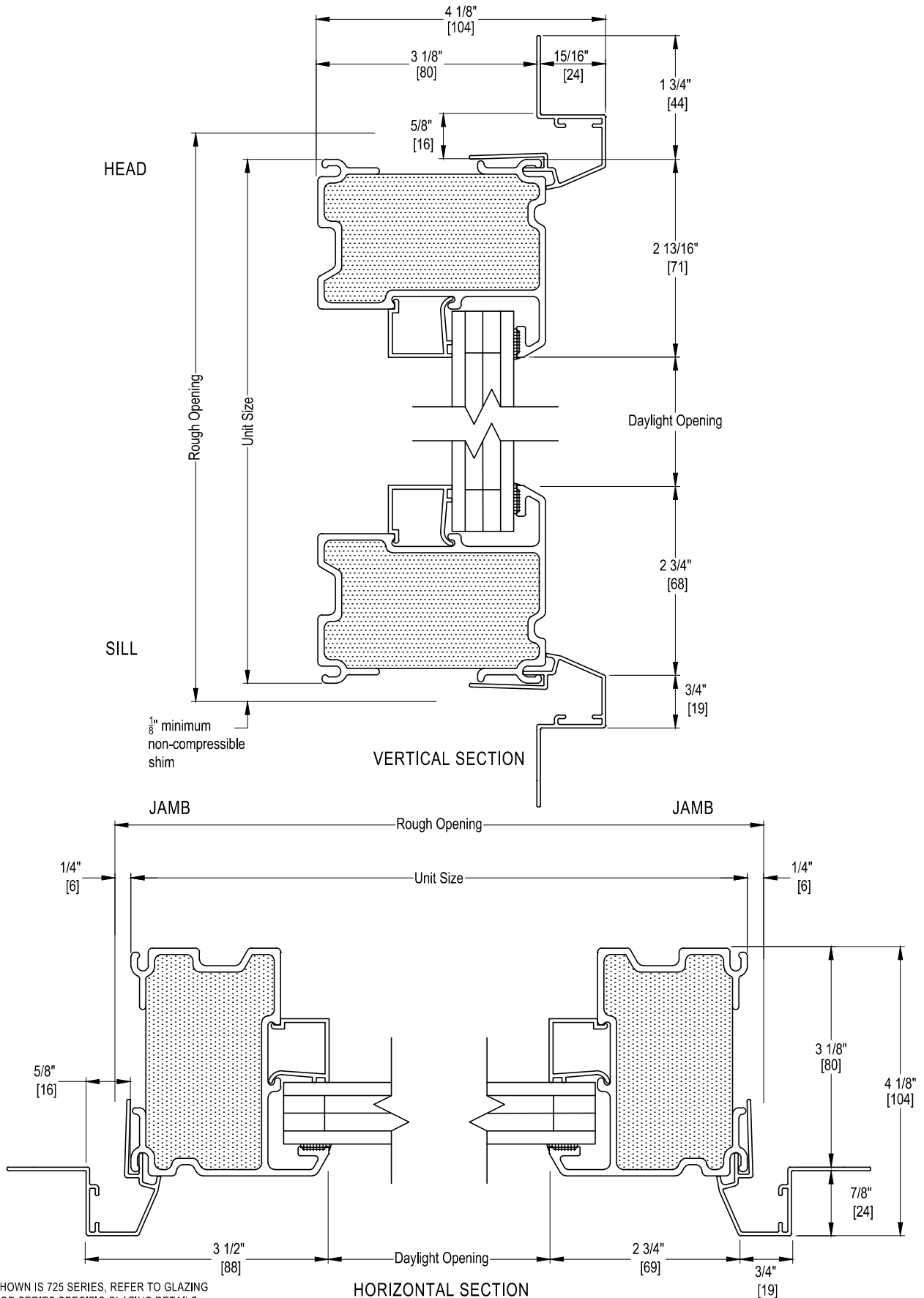


GLAZING SHOWN IS 725 SERIES, REFER TO GLAZING OPTIONS FOR SERIES SPECIFIC GLAZING DETAILS.

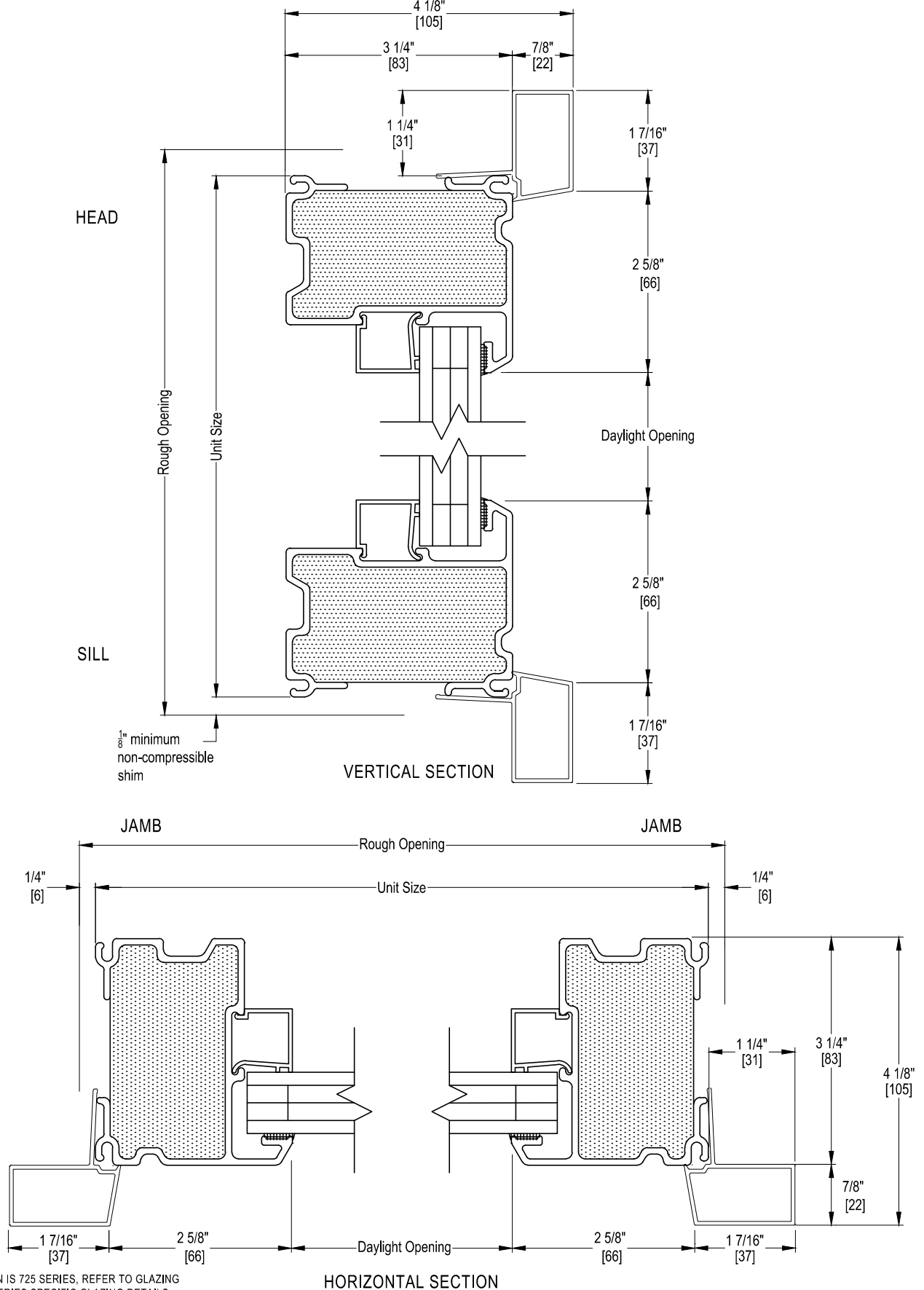
WINDOW DETAILS: FIELD APPLIED ANCHOR STRAPS


GLAZING SHOWN IS 725 SERIES, REFER TO GLAZING
 OPTIONS FOR SERIES SPECIFIC GLAZING DETAILS.

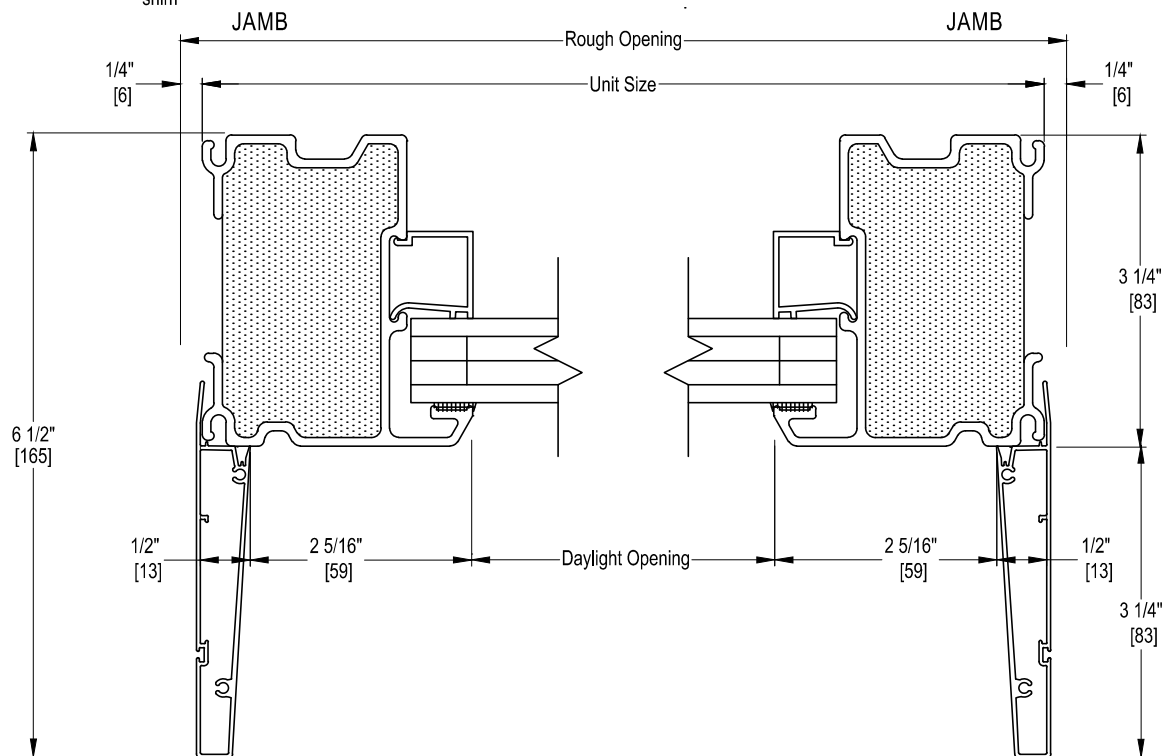
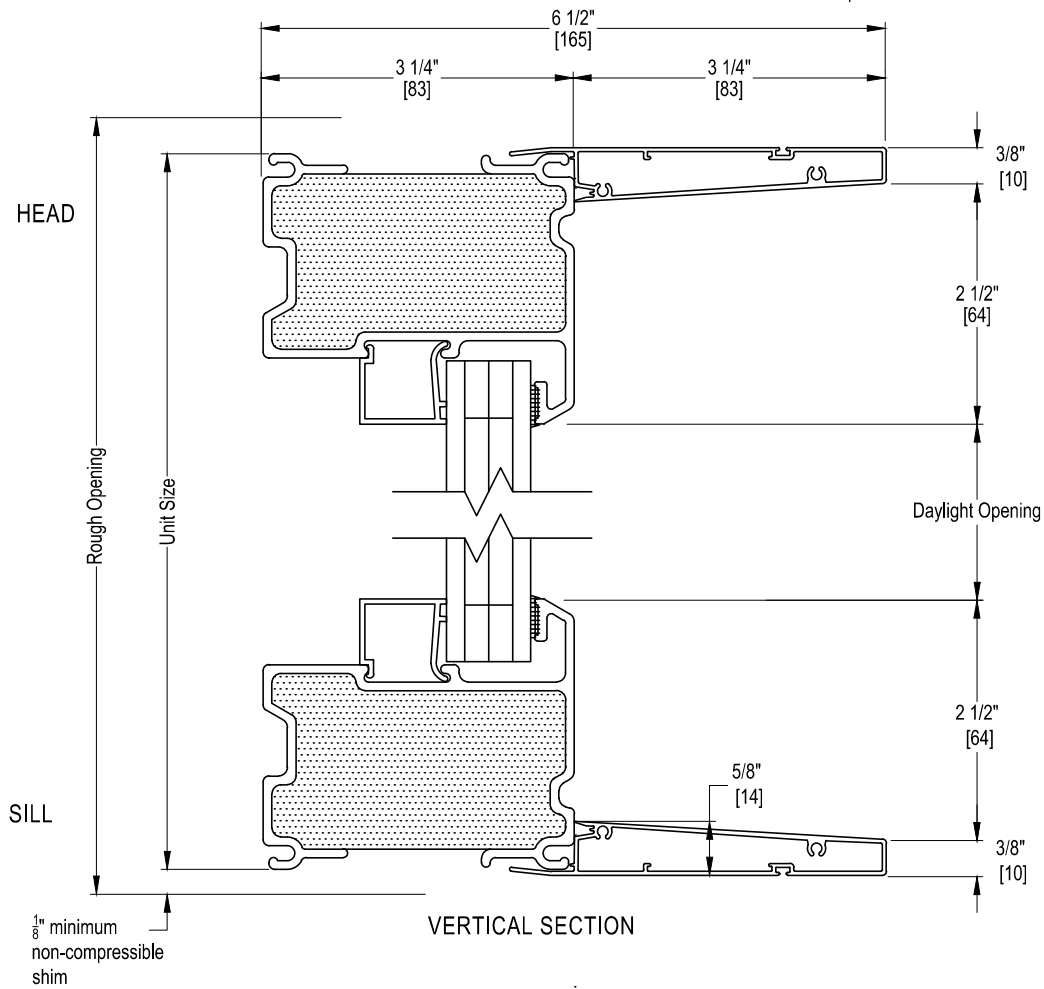
WINDOW DETAILS: ALUMINUM BRICKMOULD WITH FIN



WINDOW DETAILS: ALUMINUM BRICKMOULD WITHOUT FIN



WINDOW DETAILS: 3 1/4" EXTERIOR FRAME EXTENDER



GLAZING SHOWN IS 725 SERIES, REFER TO GLAZING OPTIONS FOR SERIES SPECIFIC GLAZING DETAILS.